



Veterans Memorial Greenway Project Update and Review of Memorial Concepts

Matthew Parent, Transportation
Kurt Chatfield, Office of Planning

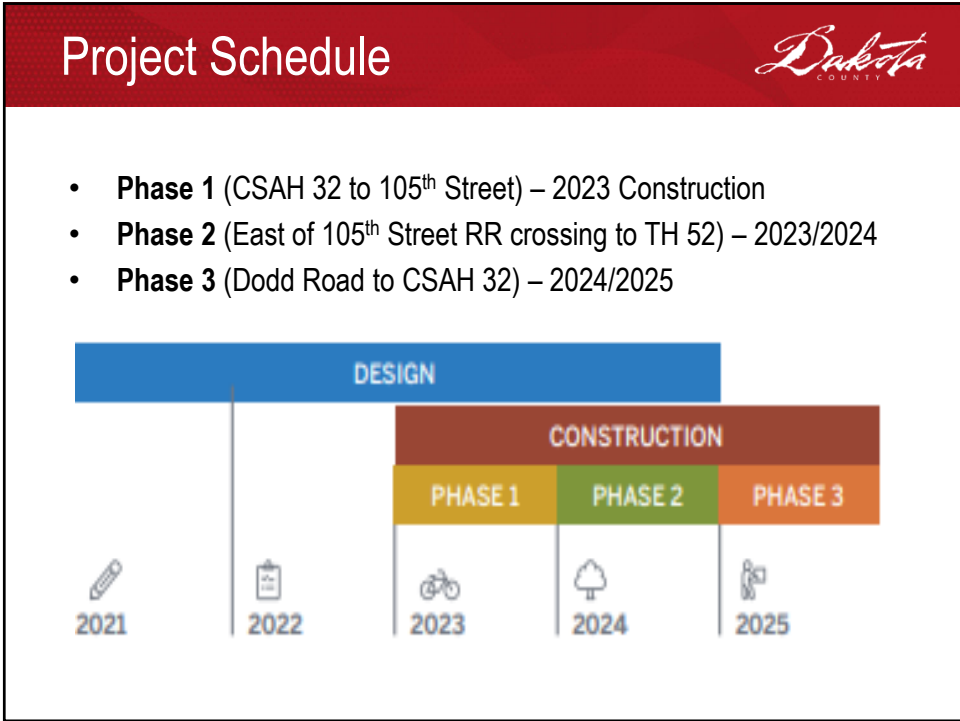
1

Design/Engineering Overview

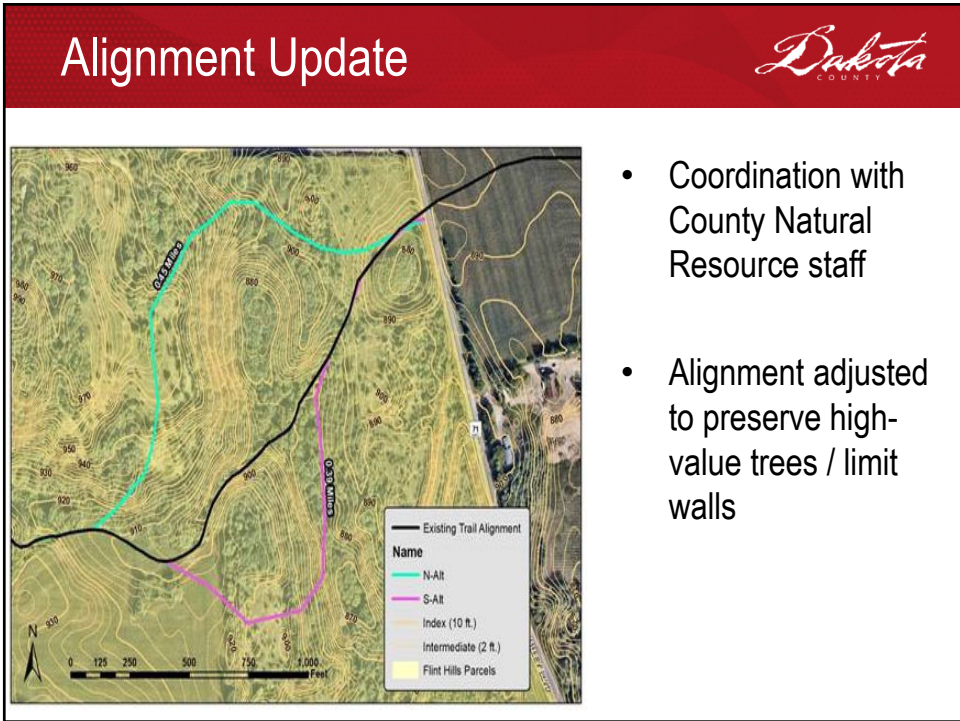


- Project Schedule
- Alignment Update and RR Coordination
- Questions/Comments

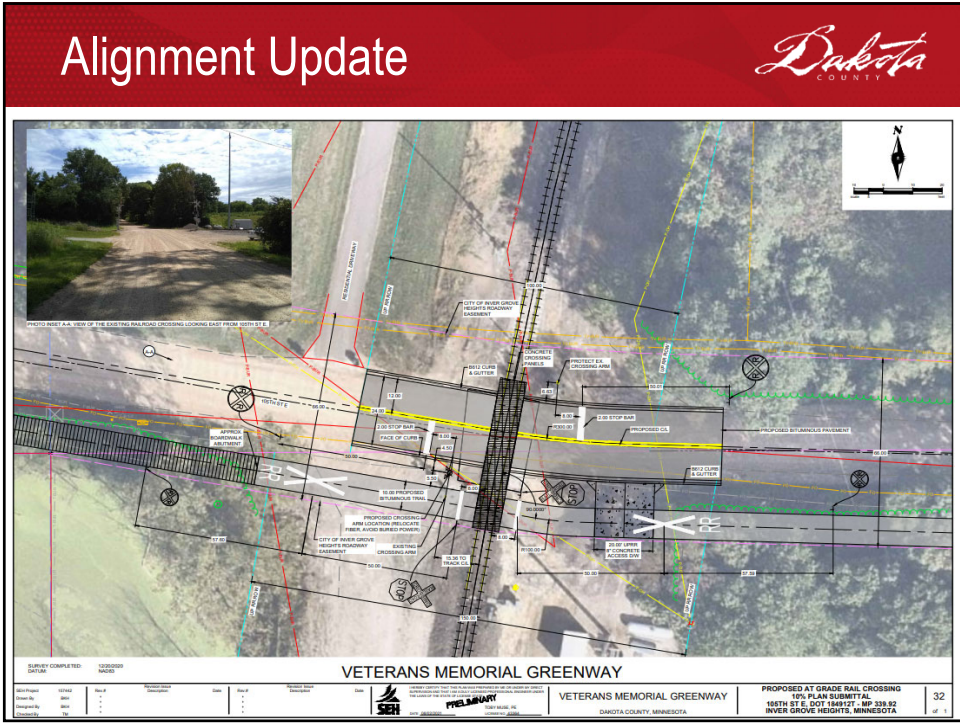
2



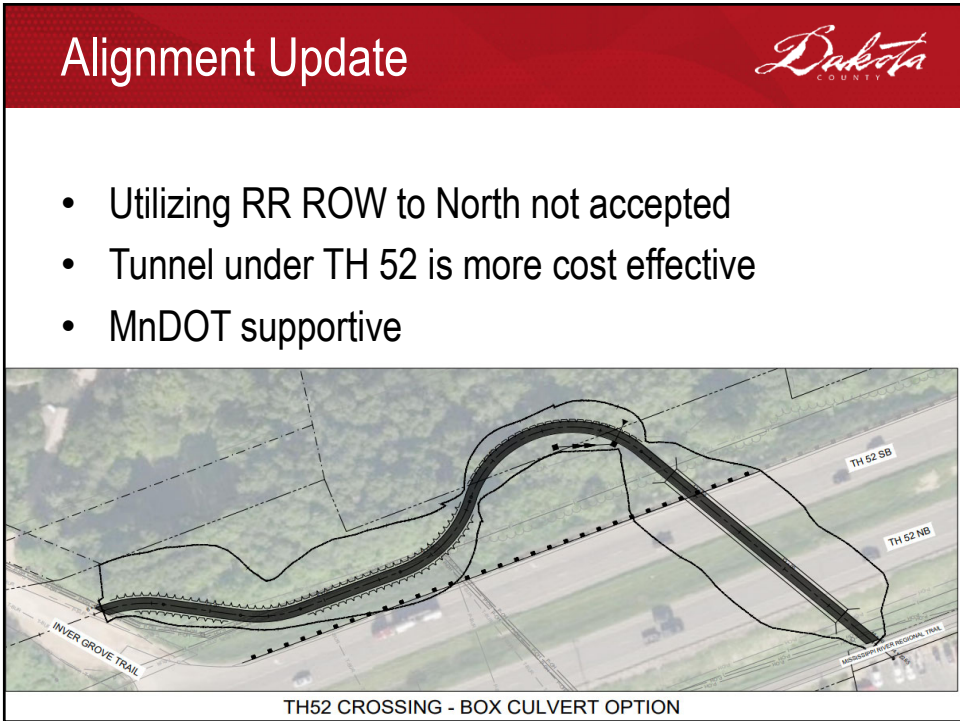
3



4



5



6

Memorial Concepts Overview



1. Veterans Advisory Group
2. Memorial types
 - **Basic** = built by County with greenway
 - **Enhanced** = Aspirational concepts seeking external funds
3. Review memorial themes and concepts

7

Veterans Advisory Group



- Board directed staff to convene a Veterans Advisory Group
- 14 members representing Air Force, Army, Marines, Navy, and Gold Star Families met eight times
- Held focus groups with Black Veterans and Native American Veterans

8

Basic Memorial Design

Typical Greenway Node

NOTES

- ① 4 FT BENCH
- ② BICYCLE RACK
- ③ RECYCLING UNIT AND WASTE RECEPTACLE
- ④ 6" CONCRETE MILK SPECIAL (INCLUDES EQUIPMENT, SCHEDULE PREPARATION, 1/2" AND 3/4" CONCRETE WITH SHIMMER FRESH, 1/2" AND 3/4" CONCRETE WITH SHIMMER FRESH, CONCRETE TO FOLLOW TRADE AND IF APPLICABLE)
- ⑤ TO BE FIELD LOCATED AT PULL-OFF AREA 1 ONLY
- ⑥ NECESSARY 3" CAL BAR
- ⑦ INFORMATION SIGN SPECIAL - 000 CLEAN-UP STATION

PULL OFF AREA 1 AND 2
STA 61444.90 TO STA 61480.79
STA 61480.93 TO STA 61493.79

Veterans Memorial Greenway "Basic" Memorial

- A. Flag poles
- B. Drinking fountain
- C. Thick, live-wood post with carved interpretive message
- D. Star shaped planter features poppies
- E. Kiosk
- F. Charging station
- G. Bench with interpretive audio
- H. Native prairie seeding
- I. Wooden pergola with impemeable roof near perimeter, louvered panels to screen utility poles
- J. Interpretive panel
- K. Striped pavement
- L. Trash & Recycling
- M. Bike fixing station

9

Memorial Corridor

Military Places
Gold Star Families
Vets Over Time
Flyers
Support & Allies
MIA Prairie
Places We Served
Main memorial
Native American Vets
Military Places

DOBBO ROAD
ROBERT TRAIL
CLIFF ROAD
AARON AVENUE
MILWAUKEE AVE
RAILROAD
HIGHWAY 52

— PROJECTED GREENWAY
● = LARGE NODE
● = MEDIUM NODE
▼ = SMALL NODE

NORTH
①

- Ten memorials along the Veterans Memorial Greenway
- Two major memorials, eight minor memorials

10

Memorial 1: Military Places

Dakota
COUNTY

Dodd Rd

- A. Flag poles
- B. Drinking fountain
- C. Thick, live-wood post with carved interpretive message
- D. Star shaped planter features poppies
- E. Kiosk
- F. Charging station
- G. Bench with interpretive audio
- H. Native prairie seeding
- I. Wooden pergola with impermeable roof near perimeter, louvered panels to screen utility poles
- J. Interpretive panel
- K. Striped pavement, opportunity for donor pavers
- L. Trash & Recycling
- M. Bike fixing station

Additional flags are enhanced features, to be built with external funds.

N
0 10 20

11

Memorial 1: Military Places

Dakota
COUNTY

Gopher Ordnance Works

Port Cargill

Nike Missile Base

Fleming Field

12



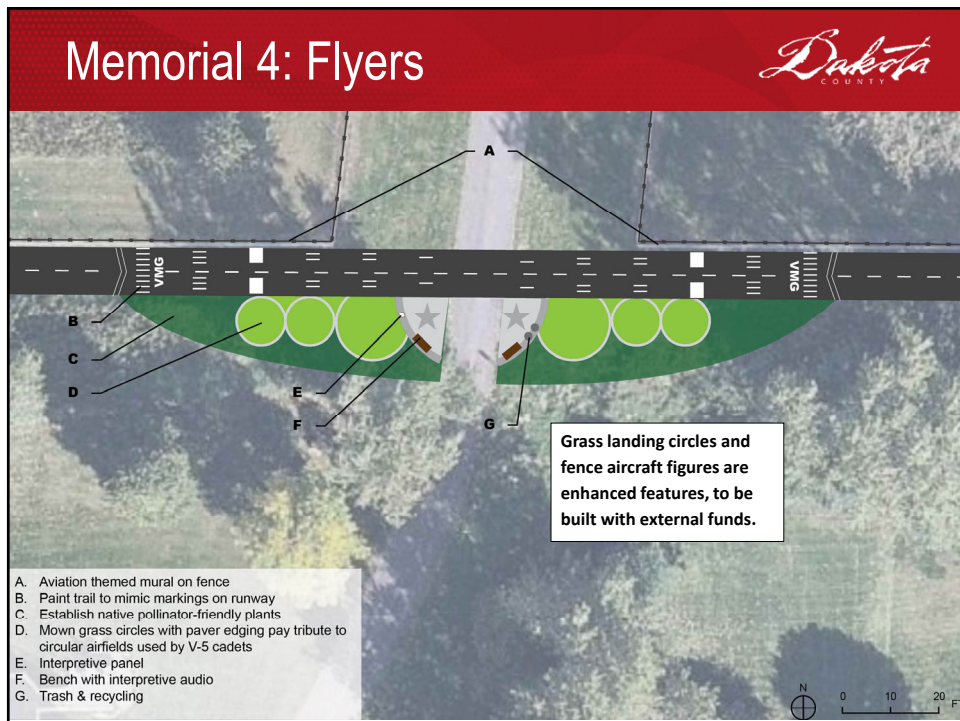
13



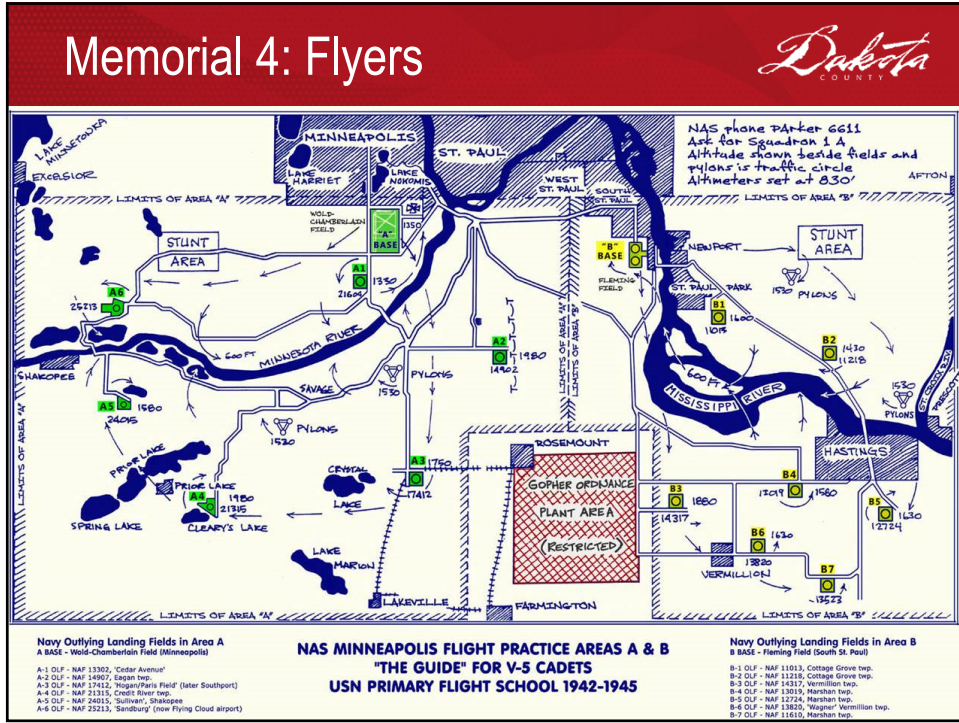
14



15



16




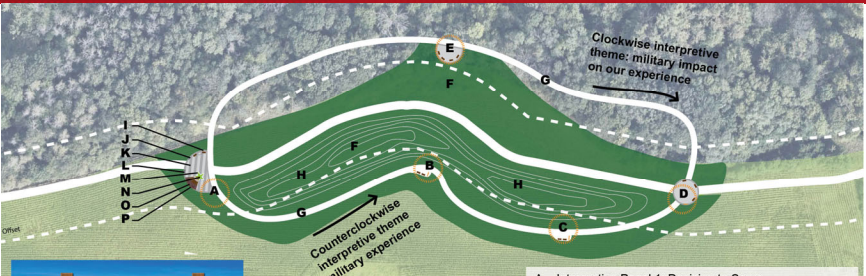
17




18

Memorial 6: MIA Prairie





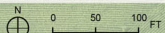


Typical interpretive panel rendering at node 6.

Interpretive sculptures and strolling loop are enhanced features, to be built with external funds.


- A. Interpretive Panel 1: Decision to Serve
- B. Interpretive Panel 2: Service Experience
- C. Interpretive Panel 3: Effects on Family
- D. Interpretive Panel 4: Leaving Military Service
- E. Interpretive Panel 5: Reflection of Service
- F. MIA Prairie
- G. Strolling loop
- H. Raised topography creates screen between strolling loop and main trail
- I. Bench
- J. Drinking fountain
- K. Striped pavement, opportunity for donor pavers
- L. Trash & recycling
- M. Star shaped planter features poppies
- N. Thick, live-wood post with carved interpretive message
- O. Wooden pergola with impermeable roof near perimeter, louvered panels to screen utility poles
- P. Charging station

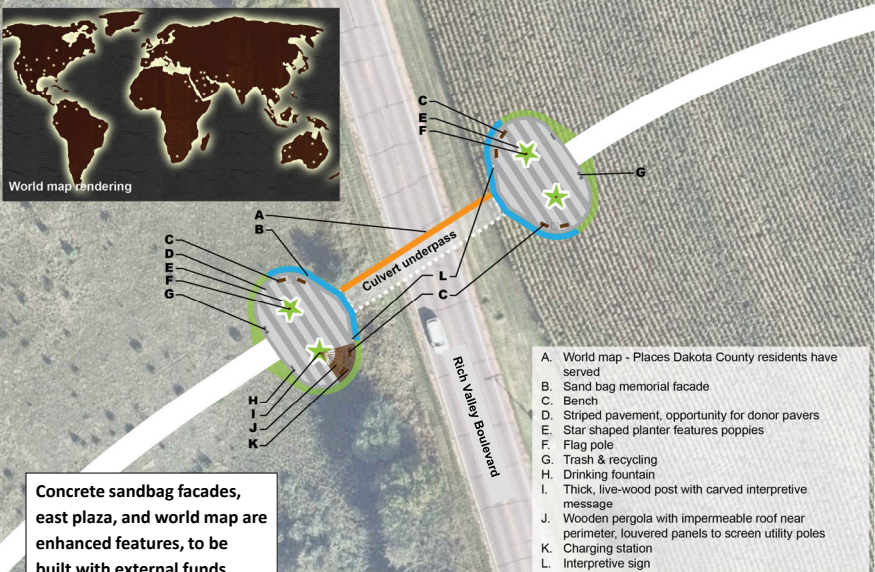
Note: To achieve strolling loop design intent the trail buffer is extended from a 50' to 100' offset from trail centerline in MIA Prairie area




19

Memorial 7: Where We Served



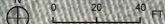




World map rendering

Concrete sandbag facades, east plaza, and world map are enhanced features, to be built with external funds.

- A. World map - Places Dakota County residents have served
- B. Sand bag memorial facade
- C. Bench
- D. Striped pavement, opportunity for donor pavers
- E. Star shaped planter features poppies
- F. Flag pole
- G. Trash & recycling
- H. Drinking fountain
- I. Thick, live-wood post with carved interpretive message
- J. Wooden pergola with impermeable roof near perimeter, louvered panels to screen utility poles
- K. Charging station
- L. Interpretive sign



20



21



22

Memorial 9: Native American Vets *Dakota COUNTY*

105th St E

A

B

C

D

E

F

G

Native American tribes' symbology and sculpture and railing enhancements are enhanced features and built with external funds.

Borman Ave

23

Memorial 10: Military Connections *Dakota COUNTY*

Additional flags and interpretive material are enhanced features and built with external funds.

A. Map of sites in Dakota County with military significance

B. Gateway sign on culvert: Welcome to VMG

C. Gateway sign on culvert: Now leaving VMG

D. Bench

E. Flag pole

F. Star shaped planter features poppies

G. Interpretive sign

H. Striped pavement, opportunity for donor pavers

I. Thick, live-wood post with carved interpretive message

J. Wooden pergola with impermeable roof near perimeter, louvered panels to screen utility poles

K. Charging station

L. Drinking fountain

M. Trash & recycling

N. Bike fixing station

O. Seat/retaining wall

24

Next Steps



- Review draft plan at March PDC and consider releasing for public review period
- Consider adoption in June 2022
- Build basic memorials with trail construction
- Support Veteran efforts to pursue funding for enhanced memorials